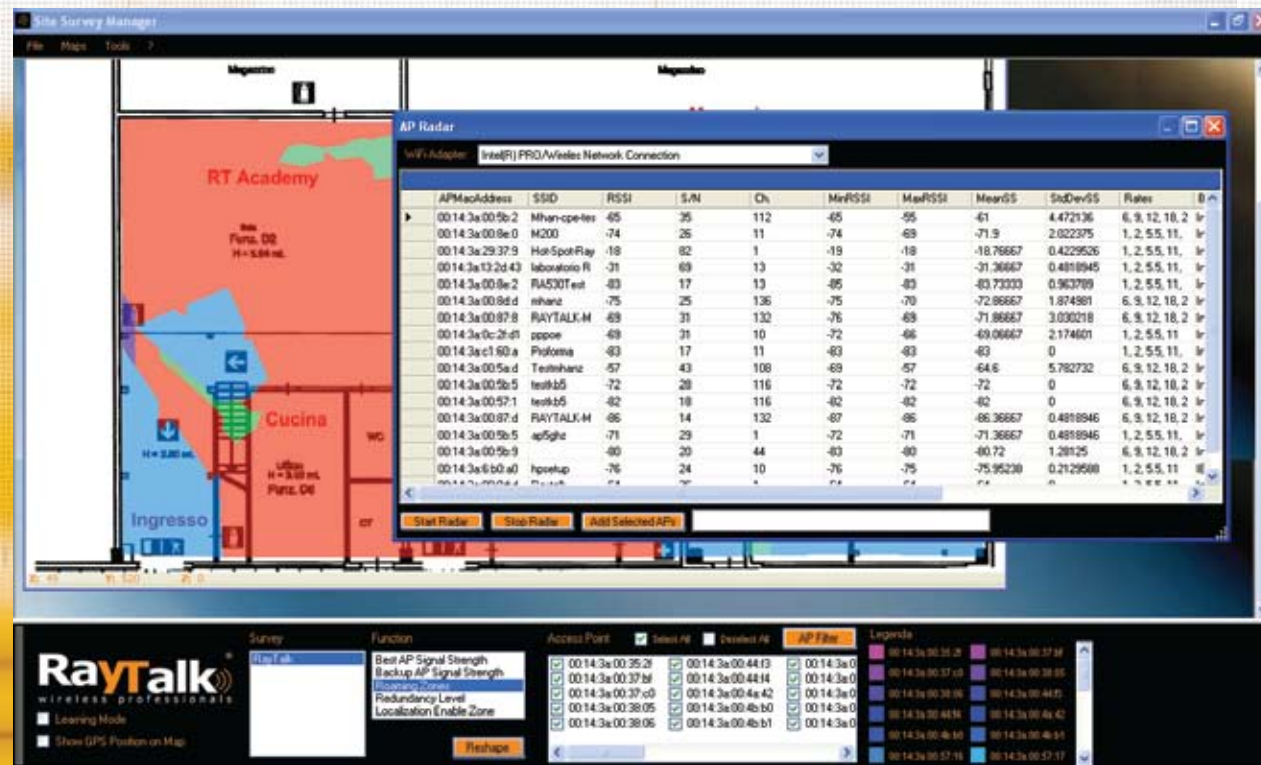


## Future features

- RF values Tuning • On-path roaming prediction • Automated RayTalk device configuration
- RayTalk Locator Platform integration • Beacon information analysis • 3D maps signal modelling
- New AP placement optimization • Open encryption area



**RT-Survey**  
Site Survey Kit Multistandard

Thanks to the Kit RT-Survey it is possible to make Indoor or Outdoor Site Survey using specific antennas for the 2.4GHz and 5GHz frequencies. The Kit may be set on several needs. For example:

- 1 PCMCIA Dual Band IEEE802.11abg - Bitrate 54/108Mbps
- External Antenna Connector - Coax Cable with N(F) connector
- Adaptors - 2,4 GHz Wi-Fi Antenna
- 5GHz HiperLan2 - Software included

2.SMT081117 rev-1.0

www.raytalk.com

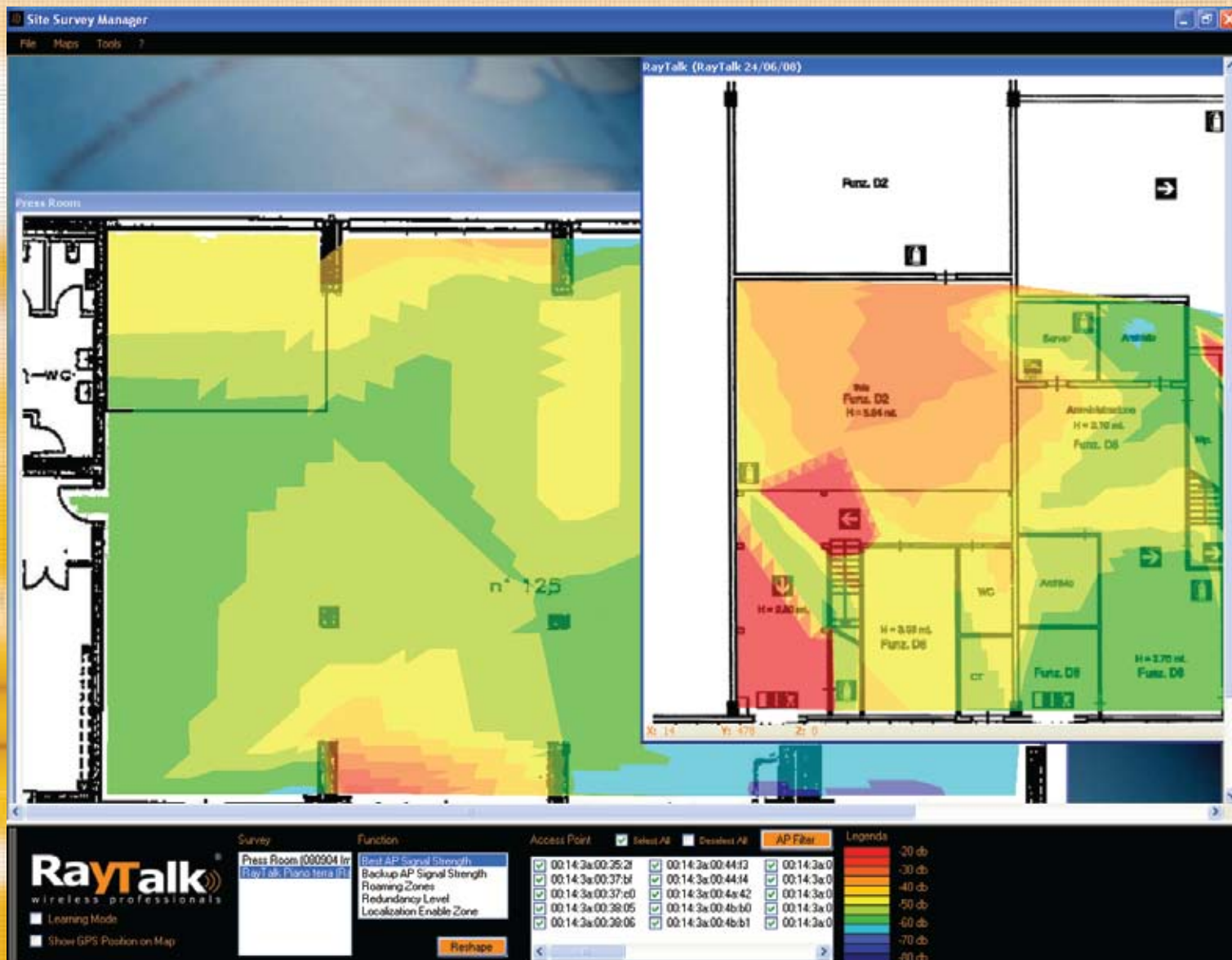
All specifications are indicative. Technical features may not correspond with the descriptions given. They can vary without notice. The weight and the measurements are approximate. The images enclosed in this catalogue are for illustrative purposes and may not correspond with the real items. The use of these products is not allowed without Government's Permission and must be carry out within the Regulations of the Country in which they will be used.

# Outdoor & Indoor Survey tool

» **SMT**  
SITE SURVEY MANAGER TOOL



# RayTalk Site Survey Manager tool



RayTalk Site Survey Manager tool is a software tool running on any 802.11 a/b/g/h (both 2.4 GHz and 5 GHz) WiFi/HiperLan-enabled laptop for design, administration, troubleshooting and certification of the 802.11 a/b/g/h WiFi/HiperLan Networks.

With its simple and user-friendly interface, RayTalk Site Survey Manager tool allows Network Administrators and wireless Professionals to optimize the coverage (coverage-holes and interferences elimination) minimizing the infrastructure costs (overlap reduction).

## Survey

With a simple survey phase, RayTalk Site Survey Manager tool discovers all the audible 802.11 a/b/g/h WiFi/HiperLan APs (both 2.4 GHz and 5 GHz) saving all the information on the signal strength and the communication capabilities together with the geographical references. The GPS module interface eliminates the on-map location complexity allowing the user to quickly make a complete wide-area survey.

## Site Survey functions

- Multi-map management
- Real time 802.11 a/b/g/h WiFi/HiperLan signal display (Access Points Radar)
- GPS Module Integration
- Wizard for easy Site Survey procedure



## Analysis

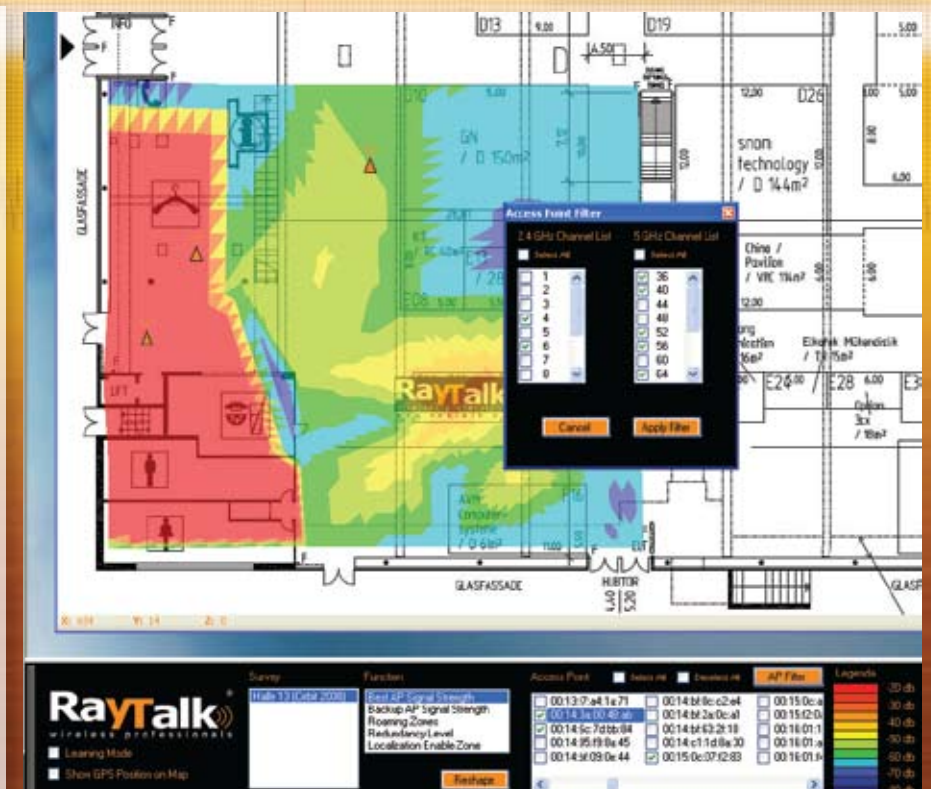
RayTalk Site Survey Manager tool provides a user-friendly graphic interface for the visualization of:

- AP Signal Strengths
- APs subset best Signal Strength at any given point
- APs subset backup (2nd best) Signal Strength at any given point
- Roaming zones prediction (using a user-defined APs subset)
- WiFi coverage redundancy

It is also possible to save all the information on a survey portable file and print a configurable graphical report.

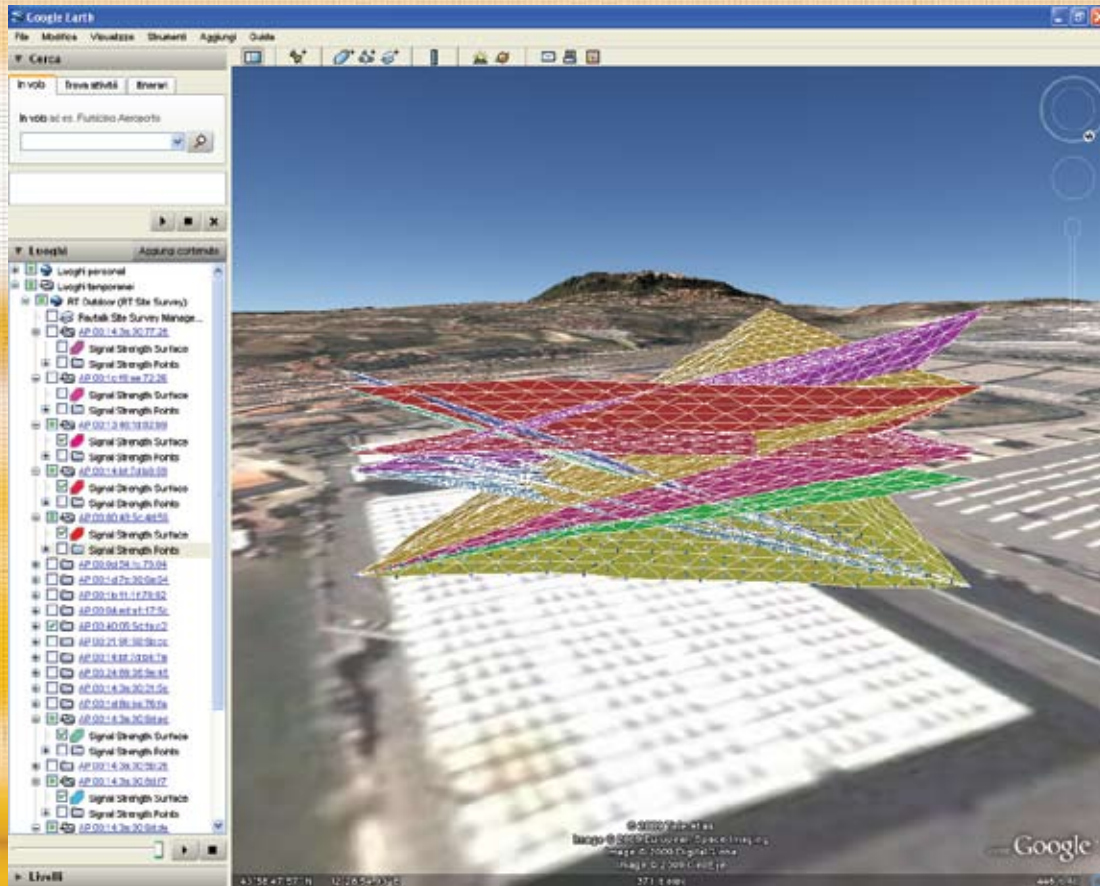
## Reporting functions

- Coverage assessment (redundancy level and signal strength evaluation)
- Backup coverage signal evaluation
- Roaming zones prediction
- Received Signal Strength, SNR and Data Rates analysis
- Automated network report generation
- Channel separation optimization





# Google Earth Integration



– Integration with Google Earth: Generation of signal map in 3D format, visible with Google Earth

## New SMT Features

- Wi-Fi channels analysis tool for radio planning (Access Point positioning and free channel not overlapping)
- Integration with Access Point manufacturer information into AP Radar and relative importation tool for the upgradeable OUI released by IEEE and including the MAC associations – Producer.
- The new SMT is optimized with a complete tool series able to generate all the professional reports which can offer the evidence of the resulted analysis and can be compared with future next checks.

